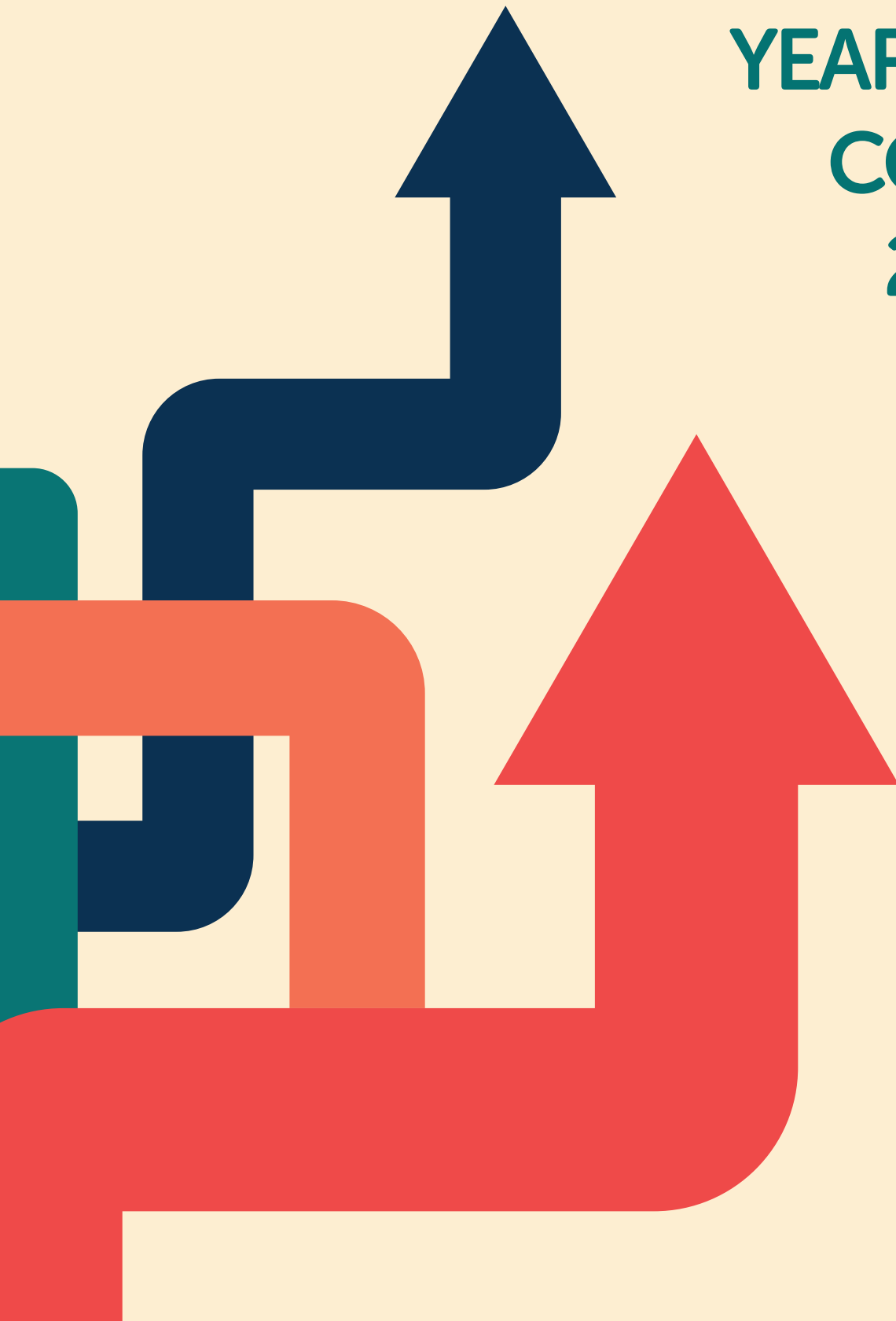


# MAKING CHOICES FOR YOUR FUTURE

YEAR 10 & 11  
COURSES  
2023/25





# MAKING CHOICES FOR YOUR FUTURE

Over the next few weeks you will be making decisions which will shape the rest of your education, and so your life. Making sure those decisions are the right ones is vitally important! In year 9 everyone studied all of the same subjects.

In year 10, there are still subjects which you all study:

- English - Language & Literature
- Mathematics
- Science
- PE (Core)

To complete your curriculum you will need to choose four courses, using the option grid (see page 29), you would like to study. This booklet lists all of the courses we offer, what you will study and where they can take you in the future. Go through this booklet carefully and, using the grid, select the courses you would like to study over the next two years. We will guide and support you in your choices over the coming term.



# THE CORE CURRICULUM

## English Language

Students will study a range of fiction and non-fiction texts to develop their reading and writing skills. There is a range of different types of writing including fiction and non-fiction. Assessment is 100% exam-based. The first exam, worth 40%, lasts 1 hour 45 minutes. Students will answer questions on texts from 20th century literature and also produce a narrative piece of writing. The second exam, worth 60%, lasts 2 hours. Students respond to questions on 19th and 21st century non-fiction and produce two pieces of non-fiction writing. Students also complete an oral presentation in school graded separately: pass, merit or distinction.

## English Literature

Students study a range of literature texts from different periods including a Shakespeare play, poetry from 1789 to the present day, Unseen Poetry, post-1914 drama (An Inspector Calls) and fiction and 19th century fiction (Jekyll & Hyde or A Christmas Carol). Assessment is 100% exam-based. The first exam, worth 40%, is 2 hours long and the second, worth 60%, lasts 2 hours 30 minutes.

## Mathematics

Students will develop their skills and knowledge of Numeracy, Algebra, Geometry and Statistics at either Higher (Grades 9 to 4) or Foundation (Grades 5 to 1) level.

Year 9 students will have already begun to learn some of the Key Stage 4 content and this will continue into year 10 at an increased level. Students must secure progress through year 10 if they are to achieve their target grade by the end of year 11 when they will sit their final GCSE examination. There is no controlled assessment for Mathematics.

## Science

In year 9, all students begin the first modules of the GCSE AQA Science course including: Cell Biology, Atomic Structure and the Periodic Table and Energy. Depending on their progress, they will be recommended to take one of the following pathways:

**Separate Triple Science - Biology, Chemistry and Physics** - This course leads to separate GCSE qualifications in each Science subject. This is a more demanding option for students and is available for students who have achieved a high level in year 9 and who can see themselves studying one or more Sciences at Advanced Level as they have a real passion for Science. If you opt for this you will be taught when Combined Science students have lessons as well as extra lessons in the option block.

**GCSE Combined Science (Trilogy)** - This course is interesting and relevant to all students. In year 10, students will continue the Science course which will lead to the awarding of two GCSE grades at the end of year 11. This Combined Science course features many of the major theories of Science and students will study modules of Biology, Chemistry and Physics. Students explore opportunities for skills development throughout the course as well as exploring the key scientific explanations that help us make sense of our lives. The Combined Science course content is outlined in the table below:

Biology	Chemistry	Physics
<ul style="list-style-type: none"><li>• Cells</li><li>• Organisation Infection and response</li><li>• Bioenergetics</li><li>• Homeostasis and response</li><li>• Inheritance, variation and evolution</li><li>• Ecology.</li></ul>	<ul style="list-style-type: none"><li>• Atomic structure and the periodic table</li><li>• Bonding, structure and the properties of matter</li><li>• Quantitative chemistry</li><li>• Chemical changes</li><li>• Energy changes</li><li>• The rate of chemical change</li><li>• Organic chemistry</li><li>• Chemical analysis</li><li>• Chemistry of the atmosphere.</li></ul>	<ul style="list-style-type: none"><li>• Energy</li><li>• Electricity</li><li>• Particle matter</li><li>• Atomic structure</li><li>• Forces</li><li>• Waves</li><li>• Magnetism and electromagnetism.</li></ul>

## SECURE

This option is designed for students who may need additional support with English and Maths. The support is closely linked to the work students are following in English and Maths lessons. It is offered via small groups and one to one tutoring to meet individual needs.

# CONTENTS

Core Curriculum		4
Art & Design	GCSE	6
Business Studies	GCSE	7
Computer Science	GCSE	8
Design & Technology	GCSE	9
Digital Information Technology (ICT)	BTEC - Tech Award	10
Food Preparation & Nutrition	GCSE	11
French	GCSE	12
Geography	GCSE	13
Health & Social Care	BTEC - Tech Award	14
History	GCSE	15
Media	GCSE	16
Music	GCSE	17
Performing Arts	BTEC - Tech Award	18
Photography	GCSE	19
Physical Education	GCSE	20
Religious Studies	GCSE	21
Spanish	GCSE	22
Sport Studies	Cambridge National Certificate	23
Travel & Tourism	BTEC - First Award	24
Triple Science	GCSE	25
Labour Market Information for the North East		26
EBacc Information		27
Options Grid		29
What Happens Next?		30

GCSE

# ART & DESIGN

## What qualification will the course lead to?

GCSE in Art and Design

## Who are the best people to see for more information?

Speak to any member of staff in the Art Department who will be more than happy to show you visual examples of work from GCSE students, or email Mrs Clazey if you have any questions.

Mrs L Clazey, Head of Art - lclazey@clvweb.co.uk

## What will I study?

GCSE Art and Design starts in year 10 with the opportunity to develop your practical skills and experiment with a variety of different techniques through a series of mini practical workshops in drawing, painting and printmaking. You will then start your main project in the summer term and you will have a choice of themes for this. You will have the chance to explore different painting, printing, mixed media, 3D, photographic and digital techniques. You will be encouraged to research and analyse the work of other artists who inspire you throughout the course.

## How will it be similar to what I have done in year 9?

You will use many of the skills you have developed in Art during year 9 such as recording and developing your ideas through drawing, painting and mixed media, and presenting your understanding of the work of other artists. You will focus more on exploring your own individual ideas at GCSE and develop your skills in independent thinking, expanding on your art experiences in year 9.

## How will it be different to other courses?

Art and Design is a very practical course where you will spend much of your time creating your own work. This will require independence, self-motivation and excellent time management. You should also have strong literacy skills as there will also be artist presentations, written analysis, evaluations and reviews to complete, all of which are assessed. There is no written final exam in Art and Design, but a practical one which is spread over 10 hours.

## How will my work be assessed?

You are assessed on your ability to record your ideas and observations in drawings and photographs, research the work of other artists, experiment with materials and how you bring all of this research together into a personal final piece. Your coursework (Unit 1) is completed during year 10 and 11 and counts for 60% of the final grade. The exam project (Unit 2) completed in year 12 is worth 40% of the final grade. Coursework is continually assessed, and work completed throughout both year 10 and 11 contributes to the coursework grade.

## Will all my study be in school?

Most of your learning will take place in the art rooms using specialist equipment and materials, but home learning is also an important part of the course. It will be necessary for you to take photographs and complete artist research presentations outside of school as part of your coursework. You will also be expected to use the art rooms after school and at lunchtimes to access materials and develop your work further to reach the higher grades. There will also be the opportunity to take part in trips to galleries/museums or complete workshops with visiting artists.

## What will be especially important for me to succeed on the course?

Keys to success in GCSE Art are - having an inquisitive disposition, strong views and opinions, self-motivation, dedication and a real passion for art. You should really enjoy experimenting with different media and techniques and be willing to take creative risks with your artwork. You don't just have to be good at drawing to do well in Art, as we encourage students to work to their strengths using a wide range of media.

## How would it help me in future?

This course could be the first step towards an A Level or simply a way of nurturing your creativity and independence. This could lead to a degree in a number of Art and Design courses, or help you to be creative in another course you choose. The range of possible careers you could pursue is enormous; you could become an illustrator, games designer, architect, interior designer, art therapist, arts manager, graphic designer, set designer, fashion designer, costume designer, web designer, car designer etc.

## What will I study?

You will study a range of business topics, for example:

- How do you set up a business and expand it?
- How do businesses employ people and manage them?
- How do businesses make people work harder?
- How do businesses persuade you to buy their products through marketing?
- How do businesses produce products and services in an efficient and quality manner?
- What effect do external factors such as the economy have on businesses?  
How does a business manage its finances?

## How will it be similar to what I have done in year 9?

You may have looked at some business contexts as part of the year 9 Computing course. You will develop your understanding of these further over the two years. We will build on your Maths skills in percentages, averages and graphs. Your English ability to write in an analytical and evaluative way will also be tested further. You will also be expected to present your work using different media in a clear and professional way.

## How will it be different to other courses?

This business course sets out to give you a broad introduction to the business world. It covers a wide range of business topics. You will also be challenged to develop softer skills during the course such as teamwork, communication and negotiation.

## How will my work be assessed?

You will complete two exams in year 11.

### Component 1: Business Dynamics

- Written examination: 2 hours – 62.5% of qualification. A mix of short answer and structured questions based on short case study material covering all of the specification content.

### Component 2: Business Considerations

- Written examination: 1 hour 30 minutes – 37.5% of qualification.
- Case study data response questions covering all of the specification content.

## Will all my study be in school?

Most of it will, but you may go on visits to businesses and business people will visit you to help you with your work. We aim to do this as part of the production and marketing units.

## What will be especially important for me to succeed on the course?

You will need to have an interest in a business or a famous entrepreneur. You could be considering setting your own business up or working for an organisation when you leave school. We will also expect you to demonstrate progress with your English and Maths skills. The ability to form balanced arguments on paper and assess business performance through calculations will be crucial.

## How would it help me in future?

It will certainly give you a better understanding of how businesses work! It might make you a better consumer or it might help you to get a job. It will help you to develop important skills needed in businesses, such as the ability to work with others, communication skills and problem-solving skills.

GCSE

# BUSINESS STUDIES

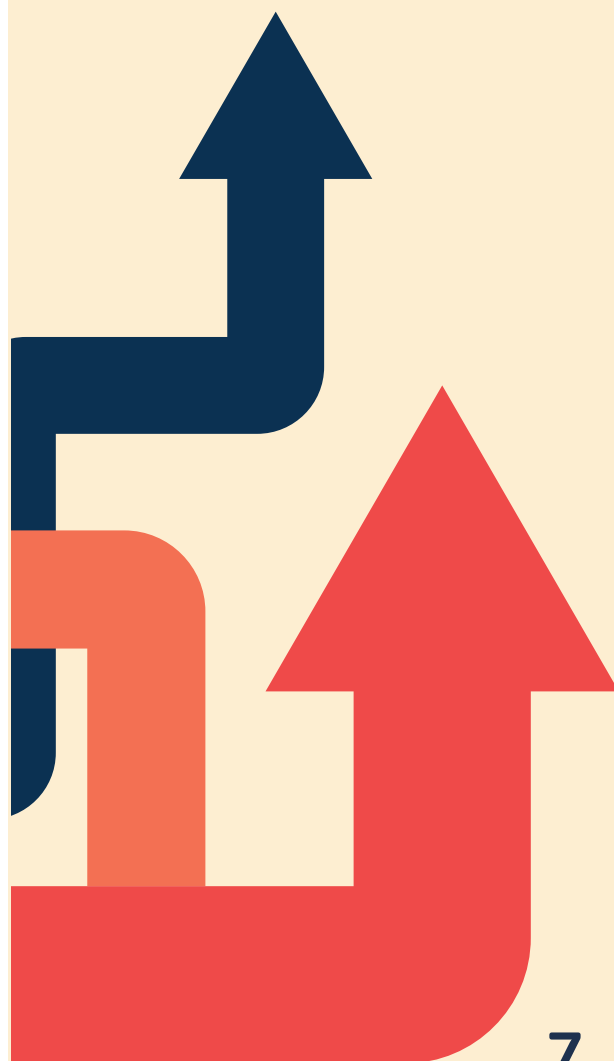
What qualification will the course lead to?

GCSE in Business Studies

Who are the best people to see for more information?

Mr Knight, Head of Business  
- [cknight@clvweb.co.uk](mailto:cknight@clvweb.co.uk)

Or any of the Business staff on the middle floor of Innovate.



GCSE

# COMPUTER SCIENCE

## What qualification will the course lead to?

GCSE in Computer Science

## Who are the best people to see for more information?

Mr Robson, Head of Computer Science -  
probson@clvweb.co.uk or

Mr Woodhouse, KS4 Coordinator -  
jwoodhouse@clvweb.co.uk

## What will I study?

The course is split into three parts. These include:

- **Computer Systems** - This is assessed by a written exam paper which has a mixture of short and long answer questions on topics such as storage, networks and security
- **Computational Thinking and Programming** - This is assessed by a written exam paper which has a mixture of short and long answer questions on topics such as algorithms, programming techniques, and data representation
- **Programming Project** - Students create solutions to computing tasks chosen from a set of options supplied by the exam board.

On this course you will learn to:

- Develop your understanding of current and emerging technologies and how they work
- Look at the use of algorithms in computer programs
- Develop computer programs to solve problems.

## How will it be similar to what I have done in year 9?

This work will share many similarities to year 9 Computing in terms of learning in-depth about how computers work, the components which make up a computer and how they represent and store data. You will also further develop the Python programming skills you have developed before Christmas by writing more in-depth programs.

## How will it be different to other courses?

This subject takes a mixed approach to lessons, with some being theory-based and some being practical. The practical programming lessons involve being sat at a desktop machine writing code. You will also have to think logically to tackle many of the problems set, thoroughly breaking them down to make them achievable.

## How will my work be assessed?

50% is assessed via the Computer Systems paper (1hr 30 mins). 50% is assessed via the Computation Thinking and Programming paper (1hr 30 mins). You will also undertake a programming project which is internally assessed and is used to develop your programming skills. The programming project does not count towards your final grade but does provide valuable learning which will be necessary for the Computational Thinking and Programming paper.

## Will all my study be in school?

The major part of the course will be completed in school. There will be regular work to do at home and the tasks will range from practice exam questions to developing your programming skills.

## What will be especially important for me to succeed on the course?

The ability to think logically and manage deadlines. A strong interest in computing as well as an ability in Maths, particularly logic and problem-solving.

## How would it help me in future?

The computing industry is very large with excellent career prospects. Computer Science is a great way to develop critical thinking, analysis and problem-solving skills which can be transferred to further learning and everyday life. Students who want to go on to higher education and employment in the field of Computer Science will find it provides a superb stepping stone.



## What will I study?

Design Technology is so much fun and can lead to so many exciting and well paid careers. On this course, you can be any sort of designer you dream of being. For example, you may be a budding Jewellery Designer and wish to work with precious metals, perhaps you are a promising Automotive Designer and love designing cars and other vehicles or maybe your interest lies in Interior Design, Architecture, Graphics, Sports Equipment Design, Fashion Design, Textile Design, Children's Toy Design or Furniture Design. These are only a few of the areas you will be encouraged to choose from.

## How will it be similar to what I have done in year 9?

The work you do at GCSE is very different to year 9 in many ways. You will work on one big project that you can set around your own interests or hobbies. The project you work on can focus on any material area, for example, maybe you want to work in textiles, graphics, metal, wood, paper and boards or a combination of all of these! What you are probably not aware of is all of the previous technology work you have done is part of the GCSE Design Technology course so you will be success-ready! You have complete freedom to create your own identity as a real designer.

## How will it be different to other courses?

The Design Technology Department regularly achieve the best results in the country. GCSE is unique and unlike any other subject. You will be taught by teachers who have all worked in industry as real designers. You will learn a whole range of new skills, for example: how to draw like a real designer, how to produce high quality computer drawings, how to make things using high-tech equipment( laser cutters, 3D printers, vinyl cutters, hi-tech sewing machines etc.) You will learn how to present your work like a professional and the skills you will learn will help you in other subjects too, for example, developing detailed written studies and advanced ICT skills. You will be taught how to create intricate book illustrations, complicated computer drawings, automotive drawing, architectural work, fashion drawings and so much more. Through learning how to draw technically in Design Technology you are working like a REAL designer.

## How will my work be assessed?

50% Coursework & 50% Examination.

## Will all my study be in school?

Yes; however, as in all subjects, it will be expected that you make a contribution to your coursework through home learning.

## What will be especially important for me to succeed on the course?

Bring with you an open and questioning mind and creative ideas and we will teach you the rest! If you have ever thought "Why has someone not invented a ...?" then this course is for you! The teaching staff have a massive range of expertise and we have all worked in industry as real designers. We also have after school clubs where you can be part of the design competition club or you can work with staff to design and create beautiful products to take home and we supply all of the materials!

## How would it help me in future?

Design and Technology will definitely help you in the future. Not only will you explore the design process, work with materials and make beautiful and outstanding products, you will also gain valuable transferable skills. In the future, a GCSE in Design Technology on your CV will show any future employer that you are: a strong problem solver; a competent user of ICT; able to express your ideas confidently and in a number of ways. It will show that you are creative and have a flexible way of working and communicating. In addition, learning how to design will be really helpful when you are ready to decorate your own room or move into a new house!

We are very proud to have had some very successful students do this course who are now architects, designers for Mercedes FI, interior designers, fashion designers, sports equipment designers and many more exciting design professions. However, most of all, you will learn the joy and sense of achievement of designing something for yourself or someone else.

GCSE

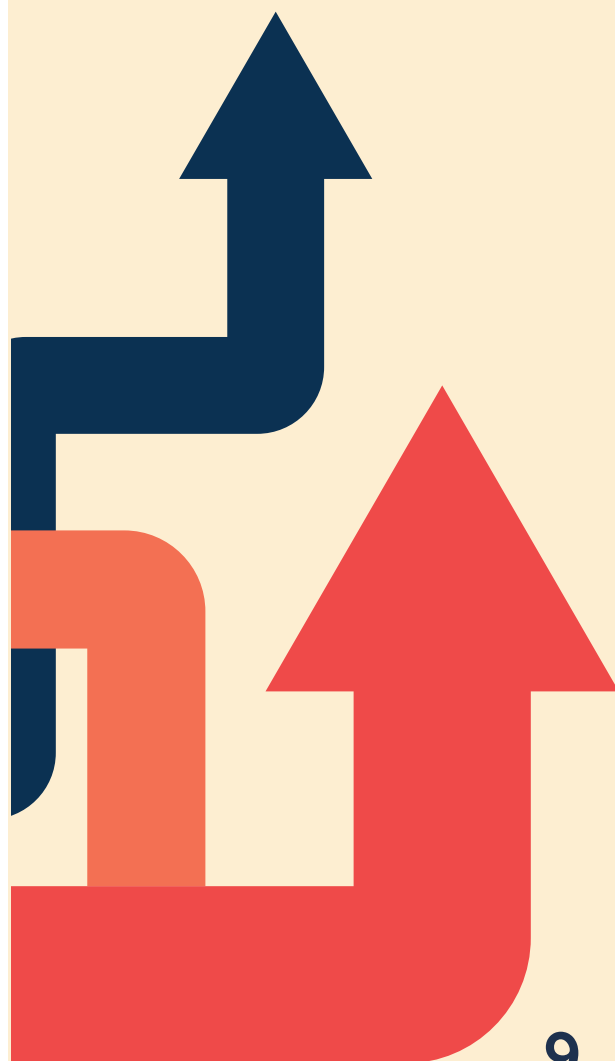
# DESIGN & TECHNOLOGY

## What qualification will the course lead to?

GCSE in Design and Technology

## Who are the best people to see for more information?

Miss Harle, Head of Technology  
- charle@clwweb.co.uk



## BTEC - TECH AWARD

# DIGITAL INFORMATION TECHNOLOGY (ICT)

### What qualification will the course lead to?

BTEC Tech Award Level 1 and 2 in Digital Information Technology

### Who are the best people to see for more information?

Miss Rowe, Head of ICT - [lrowe@clwweb.co.uk](mailto:lrowe@clwweb.co.uk)

### What will I study?

You will study 'digital IT' – from UX (user experience) and interface design to data management and IT systems. You will explore, develop and apply highly sought-after key skills such as data management and data protection, project planning, and the design of user interfaces and dashboards to present and interpret data. You will learn about the iterative design process, cyber security, virtual teams, codes of conduct, legal and ethical issues. You will also gain an understanding of relevant employability skills and personal attributes, e.g. self-management and communication skills and the ability and willingness to critically analyse your own performance.

### How will it be similar to what I have done in year 9?

Data collection and analysis carried out in Year 9 ICT will be relevant to you as well as Cyber-Security from Computing. You will consider how design principles such as the use of colour, font, and layout impact on the user, and you will reflect on your work and make sure it is suitable for the audience's needs.

### How will it be different to other courses?

The digital sector is a major source of employment in the UK. This qualification gives you an introduction to 'digital' – from UX and interface design to data management and IT systems. The Digital Information Technology course recognises the value of learning skills, knowledge and vocational attributes. The Tech Award gives you the opportunity to develop sector-specific applied knowledge and skills through realistic vocational contexts. Component 3: Effective Digital Working Practices requires you to apply decision-making skills and techniques in line with different organisations' use of digital systems and the wider implications associated with their use.

### How will my work be assessed?

**Component 1: Exploring User Interface Design Principles and Project Planning Techniques** - internally assessed 30%. Develop your understanding of effective user interfaces and managing a project. You will plan, design and create a user interface.

**Component 2: Collecting, Presenting and Interpreting Data** - internally assessed 30%. Understand the characteristics of data and information and how they help organisations make decisions. Use data manipulation methods to create a dashboard to present and draw conclusions.

**Component 3: Effective Digital Working Practices** - written exam 1 hour 30 minutes 40% Explore how organisations use digital systems. Graded from Level 1 Pass to Level 2 Distinction\*.

### Will all my study be in school?

The majority of the course will be undertaken in school but you will also be required to do some work outside of school too.

### What will be especially important for me to succeed on the course?

You will need to be ready to work hard and be excited to learn new information.

### How would it help me in future?

Digital skills span all industries, and almost all jobs in the UK today require employees to have a good level of digital literacy. This is a hands-on course that will offer you an insight into what it is like to work in the Digital sector. You will acquire sector-specific applied knowledge and skills but you will also understand the processes and attitudes that underpin the sector.

## What will I study?

### Nutrition

- Students develop knowledge and understanding of the functional properties and chemical processes as well as the nutritional content of food and drinks
- Students understand the relationship between diet, nutrition and health, including the physiological and psychological effects of poor diet and health.

### Food

- Food provenance
- Food choice
- Students understand the economic, environmental, ethical and socio-cultural influences on food availability, production processes and diet and health choices.

### Food preparation

- Students demonstrate knowledge and understanding of functional and nutritional properties, sensory qualities and microbiological food safety considerations when preparing, processing, storing, cooking and serving food.

## How will it be similar to what I have done in year 9?

This is NOT a technology or a cookery course. It is a science-based course designed to investigate, develop and understand food and nutrition, whilst also developing some practical skills as part of investigations and formal assessments.

## How will it be different to other courses?

This course is a great opportunity to learn about and work with food and understand its science. It is probably the only lesson where you get to eat the results of your science experiments. It also will have an impact on your future health, due to the level of understanding of nutrition and the consequences of eating a healthy/unhealthy diet.

## How will my work be assessed?

The two pieces of coursework (completed in year 11) will count for 50% of your assessment. The coursework is composed of a Scientific Investigation (15%) and a Food Investigation (35%). The examination is worth 50%.

## Will all my study be in school?

Yes, but a contribution towards your coursework comes from home learning.

## What will be especially important for me to succeed on the course?

You must be organised, manage time well and be prepared to provide ingredients from home for practical lessons. You will need to have an interest in food and science. You will also be the type of student who enjoys extended projects as 50% of the final grade comes from two pieces of coursework.

## How would it help me in future?

This course complements and supports the progression towards Sport and Science related A levels and other post 16 courses. The area of food and nutrition offers a choice of careers that can lead to employment in worlds of work as different from each other as Science, Production, Management, Marketing and Teaching – Research & Food Product Development, Food Scientist, Dietician, Environmental Health Officer, Home Economist, Food Marketing, Quality Assurance and many more.

GCSE

# FOOD PREPARATION & NUTRITION

## What qualification will the course lead to?

GCSE in Food Preparation and Nutrition

## Who are the best people to see for more information?

Mrs Smith, Teacher in charge of Food and Nutrition – [jsmith@clwweb.co.uk](mailto:jsmith@clwweb.co.uk)



# GCSE FRENCH

## What qualification will the course lead to?

GCSE in French

## Who are the best people to see for more information?

Mrs Clark, Head of French - [kclark@clweb.co.uk](mailto:kclark@clweb.co.uk)  
Or any of the MFL department.

## What will I study?

You will cover a variety of topic areas ranging from holidays to new technology. You will also be given the opportunity to improve your written and spoken communication skills as well as deepening your understanding of the French culture and language. Lessons will include the opportunity to listen to contemporary French-language music, undergo web research into customs and festivals and use ICT to explore authentic French resources online. You will study three main themes over the 2-year course: Identity and Culture, National and Global Areas of Interest and School and Future Plans.

## How will it be similar to what I have done in year 9?

You will come across a lot of familiar topic areas but they will be covered in more depth. Topics include Holidays, School, Technology and Free Time. Also, the key grammar and ACTION you are already familiar with, continues to be invaluable at GCSE. There will be an emphasis on using authentic materials such as TV programmes, songs and films to help you understand that learning French is not just about learning a language but also about exploring a culture.

## How will it be different to other courses?

The approach will be very similar in Spanish as we use the same Exam Board, AQA. In Languages all skills are tested: reading, writing, speaking and listening, so exams are very different from other subjects. The longest piece of writing at foundation tier is 90 words and at higher tier is 150 words. The French GCSE is about learning a language but also about developing your soft skills such as listening, presentation, communication, cultural curiosity and also team work.

## How will my work be assessed?

You will get continual feedback from your teacher on how to improve your skills. You will complete exams in writing, speaking, listening and reading at the end of the course. Foundation and Higher tiers are available, the same tier has to be done across all 4 skills areas.

## Will all my study be in school?

Lessons will be conducted in school, but you will have the opportunity to take part in educational trips to France and there will be opportunities to go to the cinema or the theatre to see French films and plays as well as other visits which will enhance your language skills. You will be expected to do regular practice in all four skills outside of school as well as keeping up with key vocabulary and grammar learning.

## What will be especially important for me to succeed on the course?

You must have a desire to learn another language and explore different cultures. Learning a language is not always easy so you need to retain a high level of motivation for the subject and be willing to expand your knowledge and understanding independently. Learning vocabulary at home will be key to your success and you must be committed to doing this.

*"One language sets you in a corridor for life. Two languages open every door along the way."*

## How would it help me in future?

Learning a foreign language is a sought-after skill in many employment fields. You do not need to be fluent in a language in order for it to help you in your career, so even if you do not continue after GCSE, you will be recognised (and paid!) accordingly. Learning a foreign language encompasses a whole range of skills which are essential for your future. Linguists learn how to communicate effectively both in their writing and speaking. You also train to listen for key details and to read using different techniques such as skim reading, reading for detail and reading for inference. All of these skills make you more employable and show a potential employer that you have broad horizons. Further study of a language opens doors to opportunities to live, work and study abroad.

## What will I study?

Whether or not you realise it, you come across Geography every day. Do you have Google maps on your phone? It's Geography! Do you pray for a snow day? It's Geography! This course teaches you how to use it, apply it to your own studies and make sense of your world.

### Year 10 - The Human Environment:

- Changing Cities
- Global Development
- Resource Management.

### Year 11 - The Physical Environment:

- Changing landscapes of the UK (Coasts and Rivers)
- Weather Hazards and Climate Change
- Ecosystems, biodiversity and management.

**Geographical Investigations** - Alongside your course, we will also complete two days of compulsory fieldwork, where you will be required to build on the knowledge you have developed in class to complete some primary data collection.

## How will it be similar to what I have done in year 9?

The year 9 course is designed to give you a taste of GCSE Geography. Just as in year 9, you will be asked to think like a geographer and to become the skilled decision-makers and managers that this planet needs. By the end of year 9, you will have a good understanding of different physical and human geography issues, and you will build on these throughout your GCSE course.

## How will it be different to other courses?

The emphasis of this course is to equip you with the skills you will need to succeed at GCSE and far beyond. These include ICT, debating, enquiry, fieldwork, assessment, evaluation, independent study and collaborative skills. Geography is recognised by employers as an excellent future-proof course.

## How will my work be assessed?

You will be assessed by three exams at the end of year 11. You will complete the following:

- Paper 1: The Physical Environment (37.5%)
- Paper 2: The Human Environment (37.5%)
- Paper 3: Geographical Investigations (25%).

## Will all my study be in school?

The majority of your study will be in school, but you are also required to undertake two days of compulsory fieldwork, which will be towards the end of year 10. In addition to this, you will be set regular homework and revision tasks to be completed independently in your own time.

## What will be especially important for me to succeed on the course?

You need to have an interest in people, the way they live and the challenges they face in everyday life. Good Geographers pay attention to what is happening in the world around them. You will also need to apply mathematical and scientific skills to help develop key aspects of the course, as well as the willingness to carry out further reading to support your studies.

## How would it help me in future?

GCSE Geography is a course open to anyone with an enquiring mind. Geographers are desirable in the workplace not only because of their diverse knowledge but also their well-balanced skill set. During the course, you will become better communicators, problem solvers and decision-makers and become more forward thinking about global issues. Today's Geographers take on tomorrow's problems: Climate change? Hazards? Disappearing coastlines? Refugees? Biodiversity and conservation? You could be the difference the world needs!

GCSE

# GEOGRAPHY

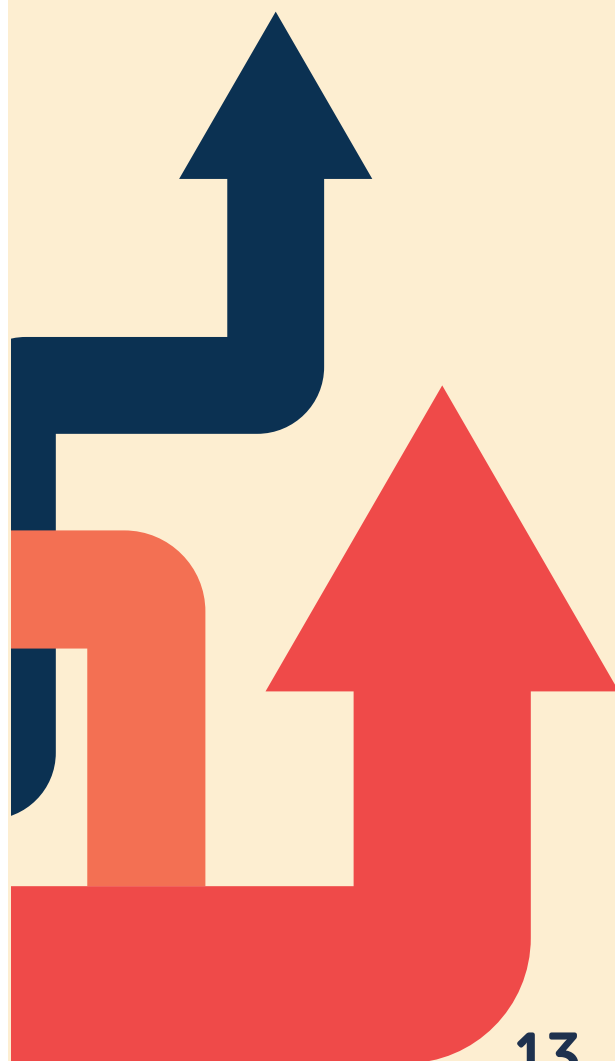
What qualification will the course lead to?

GCSE in Geography

Who are the best people to see for more information?

Mrs Penman, Head of Geography -  
lpenman@clwweb.co.uk

Or any of the teachers in the Geography department.



## BTEC - TECH AWARD

# HEALTH & SOCIAL CARE

### What qualification will the course lead to?

BTEC Level 2 Tech Award in Health & Social Care

### Who are the best people to see for more information?

Mr Brown, Head of Health and Social Care -  
tbrown@clvweb.co.uk

Or one of the teachers in the HSC department.

### What will I study?

The BTEC Level 2 Tech Award in Health & Social Care course is made up of 3 components and it is worth 1 GCSE.

**Component 1 – Human Lifespan Development.** This unit is about human growth and development across the life stages and how it is affected by different factors. It is also about how people deal with different life events. This assignment is set by Pearson (PSA), marked by the school and moderated by Pearson.

**Component 2 – Health and Social Care Services and Values.** This unit is about the range of health and social care services that meet the needs of service users. It also considers the range of values followed by care practitioners when caring for service users. This assignment is set by Pearson (PSA), marked by the school and moderated by Pearson.

**Component 3 – Promoting Health & Wellbeing** (externally synoptic exam). This unit is about the factors that affect health and wellbeing. It looks at physiological and lifestyle indicators of health and wellbeing and how these can be improved through lifestyle choices. This will be sat in Year II and marked by Pearson. The three components focus on the assessment of applied knowledge and practices. These are all essential to developing a basis for progression and therefore learners need to achieve all components in order to achieve the qualification.

### How will it be similar to what I have done in year 9?

This will be a new subject. Some of the health issues covered in Year 9 Physical Education and Health and Well Being days will give you a good background for the course but a lot of the work will be new. This is a demanding course which will require you to work to tight deadlines and produce coursework which is in detailed, in-depth and rigorous. This course does not look into pregnancy, early years or child development.

### How will it be different to other courses?

This course involves understanding and caring for people of all ages. The work covered will be linked to the work environment and you will have some opportunity to work with older people, children and professional carers. All the work covered relates to the world of work.

### How will my work be assessed?

2 of the units are assessed internally (PSA Component 1 and 2). A sample of these will be sent off to be externally assessed. 1 of the units (Component 3) is assessed by an exam taken in year II. You need to achieve a grade in this exam to be award the certification.

### Will all my study be in school?

You may have the opportunity to work with local First Schools and Residential Homes for older people and with employees from the Health, Social Care & Early Years sectors. In response to the pandemic, we have limited the visits but have had guest speakers and professionals meet with us virtually to explore their job role.

### What will be especially important for me to succeed on the course?

You need to be interested in people, well organised, good at time management and have a commitment to work hard inside and outside of lessons, able to research independently and complete your assignment within a time frame, able to write fluently and able to work independently.

### How would it help me in future?

This is an excellent course for future development into the Level 3 BTEC in Health & Social Care or into a nursery nurse course. Students who are interested in working with children, older people, in nursing, teaching or social work will find this course provides them with good background knowledge and skills. Similarly, if you are interested in psychology, nutrition or sport, this course will provide a good background. If you are interested in becoming a keyworker then this course will help you develop the core values and skills of working with people.

## What will I study?

In year 10 and 11 you will study:

- **The First World War** - you will look at the causes, events and reasons the war ended.
- **Germany: 1890-1945, Democracy and dictatorship** - you will examine Germany during the reign of Kaiser Wilhelm II, the rise and fall of the Weimar Republic, and the rise of the Nazis leading to a dictatorship in Germany.
- **Elizabethan England, c1568-1603** - you will explore the reign of Elizabeth I looking at her domestic and foreign policies including the Spanish Armada.
- **Britain: Health and the people: c1000 to the present day** - you will study how medicine and health has changed from the Middle Ages to the modern-day and examine the influences on the development of health and medicine.

## How will it be similar to what I have done in year 9?

The GCSE History course in year 10 will build upon the content you have studied in year 9, through an in-depth examination of World War One and Germany up until 1945. You will also be using skills such as describe, explain, evaluation and source analysis, which allows you to think and write like a historian.

## How will it be different to other courses?

History is a demanding yet exciting subject. You have the opportunity to develop your skills of analysis and debate as well as making comparisons to modern-day events.

## How will my work be assessed?

You will complete 2 exams at the end of year 11, each is worth 50% and they are each 2 hours long. You will be asked knowledge, explanation, evaluation and source analysis questions.

## Will all my study be in school?

Yes, but home learning tasks will build on the work completed in class.

## What will be especially important for me to succeed on the course?

History is a demanding GCSE subject which involves a lot of reading and writing. You should also be able to analyse sources, recall facts, explain the reasons for events and evaluate situations.

## How would it help me in future?

History is a useful GCSE to have in any job or career. History will develop the skills of reading, analysing, organising, summarising, reviewing and evaluating. You will also learn not to take information at face value. These skills are useful in all careers. It will be good preparation for A Level History which will lead on to many different careers, including law, education, journalism and politics.

GCSE

# HISTORY

What qualification will the course lead to?

GCSE in History

Who are the best people to see for more information?

Mrs Thornton Head of History -  
ethornton@clwweb.co.uk

Or any of the teachers in the History department.



# GCSE MEDIA

## What qualification will the course lead to?

GCSE in Media Studies

## Who are the best people to see for more information?

Mrs Elliott, Head of Media - nellcott@clvweb.co.uk  
Mr Martin - smartin@clvweb.co.uk

## What will I study?

You will investigate a wide range of media products including film & music marketing, print advertisements, BBC's Luther and the Bad Blood video by Taylor Swift. Each topic will cover the 4 main areas of Media Studies called the Media Framework. They are; Media Language, Representation, Audiences and Industry. Other topics include magazine covers, newspapers and video games.

## How will it be similar to what I have done in year 9?

If you did SECURE MEDIA it will be similar as you will have undertaken analysis and production tasks that need to be completed in an allocated time frame. The Movie Poster Project, in year 9, is very similar to the type of coursework that you will do in year 10. You need to respond to a brief, generate ideas, create planning documents, produce a final product and show that it follows your plan. If you were not lucky enough to give media a go, the course will build on the experiences that you had as part of the Create course.

## How will it be different to other courses?

It's certainly a creative subject, although that doesn't mean you have to be an artist. It also requires careful research, analysis and preparation, as well as the ability to come up with ideas. To gain higher grades you need to be able to explain your reasons behind why you think media products are made that way and how you know this. There are lots of opportunities to discuss ideas, share opinions and explain to others what you think media products are trying to tell us. You will also study a variety of specific products such as music videos, adverts, film posters and TV Crime Drama. You need to understand HOW they are constructed and WHY they are made this way.

## How will my work be assessed?

You will be assessed through your controlled assessment which is a practical production (worth 30% of the final mark), and two final exams (70% of your final mark). The exams are a huge part of your final grade and will require dedicated revision.

## Will all my study be in school?

Yes, apart from those periods of location work and homework which is designed to help you with your coursework, when taking your original images for the Component 3 tasks.

## What will be especially important for me to succeed on the course?

**REASONING** - you need to be able to interpret the media that you see, describe it and say what effects you think it has. It is similar to analysing texts in English language at times. Ideally, you will have a keen interest in media as you need to be able to talk about the news, films, adverts and so on that you have seen.

You need to:

- be confident to share your thoughts in discussion
- be good at working independently
- have a strong WORK ETHIC which means you work hard because you want to do well and you do not expect to be given the answers all the time. This is a good personality trait to have for any job in the future.

## How would it help me in future?

This course is a good preparation for a range of vocational courses in the sixth form including Level 3 Creative Digital Media Production. This subject will also help you to acquire a range of work-related skills such as time management, organisation and operating as part of a team. It also helps to make you aware of how media surrounds us and how it affects us.



## What will I study?

You will work within the strands of study:

- Instrumental Music 1700-1820
- Vocal Music
- Music for Stage and Screen
- Fusions.

We study these strands with a focus on how the music works, through activities that combine the key skills of performing, composing and appraising. You will form bands and prepare pieces for your coursework, compose pieces of music and learn how to analyse a large variety of music, from Bach to Queen! There is also an authentic gig and recital at the end of each term where you can showcase your talent and show off your hard work!

## How will it be similar to what I have done in year 9?

Much of the Music foundation work you have studied in year 9 will prepare you for the GCSE, especially group performance and composition.

## How will it be different to other courses?

Music is a very practical course, which includes lots of performance opportunities. It has a significant amount of coursework (60% of the final mark) which eases the pressure for the exam at the end of year 11. Multiple areas of the brain are activated when you pick up a musical instrument or sing. This leads to strengthened brain function which you can apply to other subjects. Music can also help to improve your mood and regulate your emotions. This can lead to a reduction in stress and anxiety, which can result in a boost to your self-esteem, confidence and general wellbeing.

## How will my work be assessed?

- 30%: Performance (One solo and one ensemble-coursework)
- 30%: Composition (Two Compositions-coursework)
- 40%: Final Listening Exam.

## Will all my study be in school?

Yes, all major study is conducted in school. There are opportunities to use some of the excellent in-school facilities including the recording studio. Home learning is to rehearse and prepare solo performances for your portfolio.

## What will be especially important for me to succeed on the course?

You will need to be able to play an instrument to grade 3 standard and have the equivalent of grade 1 theory. You don't need to have sat any exams; if you are unsure see Mrs Glanville or Mrs Griffiths and we will let you know if you are suitable.

It is a requirement of the course that you have lessons on your first instrument either in school or privately. We can help you to arrange these and there is a discount offered to GCSE students who have instrumental lessons in school.

## How would it help me in future?

The GCSE in Music is the most advantageous route for students who wish to enrol on the A Level and BTEC courses in Music. You will develop skills of performance and other transferable skills. We want you to become not just a music student but a musician. In a recent statement, the government recognised that studying music and becoming a musician can improve numeracy, literacy and behaviour and that all children should have the opportunity to engage in the joy of musical discovery. Increasingly, employers and universities are looking for students with a well-rounded education, which includes transferable skills that you would get from studying music. Many GCSE students go on to many varied pathways following their studies.

# GCSE MUSIC

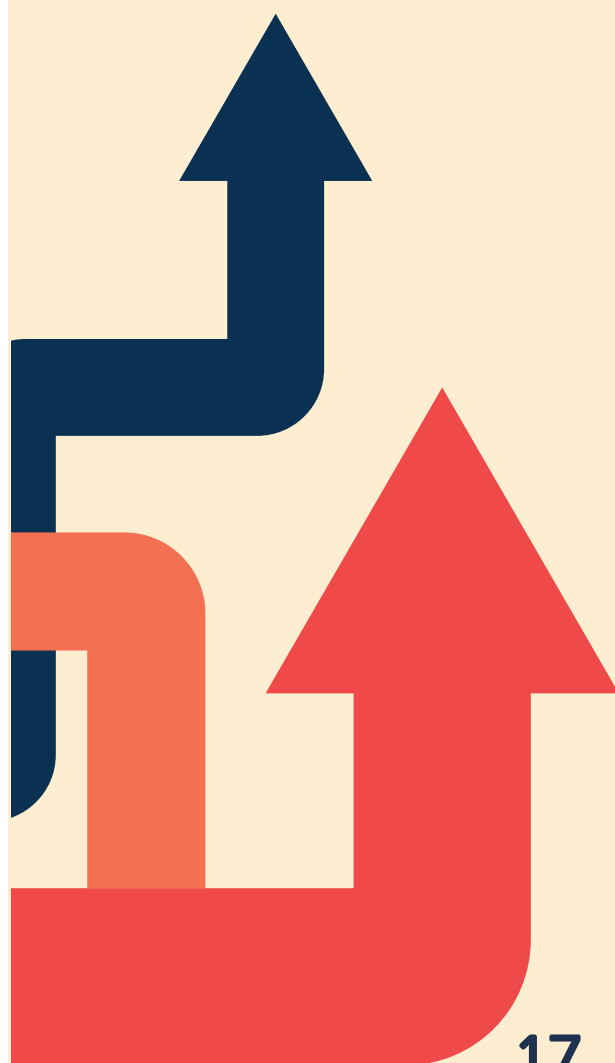
## What qualification will the course lead to?

GCSE in Music

## Who are the best people to see for more information?

Mrs Glanville, Head of Music -  
jglanville@clvweb.co.uk

Mrs Griffiths - kgriffiths@clvweb.co.uk



# BTEC - TECH AWARD

# PERFORMING ARTS

## What qualification will the course lead to?

BTEC Tech Award in Performing Arts Level 2

## Who are the best people to see for more information?

Mrs Dyer, Head of Drama -  
zdyer@clvweb.co.uk

## What will I study?

You will study a range of units on this course covering various performing arts skills. Some of the acting skills you will focus on are:

- Still Image
- Narrating
- Hot-Seating
- Role Play
- Characterisation
- Symbolism and intention
- Breaking the 4th Wall
- Directing & Teamwork.

You will have the opportunity to use mediums like:

- Sound & music
- Movement, mime and gesture
- Voice & Spoken Language
- Set and Props Costume
- Stage Layout

## How will it be similar to what I have done in year 9?

If you have done Secure Drama then you will have a great foundation to develop your skills further. The BTEC flows on from Year 9 to develop a much higher skills set. If you haven't done Secure Drama then don't panic, you will be able to pick things up easily as long as you have the right **can-do attitude**, commitment and willingness to give new things a go.

## How will it be different to other courses?

This is a largely practical course and will require you to be motivated, enthusiastic and willing to try. Most of your lessons will involve collaboration, cooperation and be largely teamwork based. You will learn how to take criticism, consider things from a different perspective and to broach some powerful and emotional topics through the medium of drama. The skills you learn in this environment will consequently aid you in English and languages where public speaking, speaking & listening and debate are large features of the course.

## How will my work be assessed?

On this course, you must complete the two internal units and then a synoptic external unit. The BTEC Tech has two units that we assess - Exploring the Performing Arts (30%) and Developing Skills & Techniques in the Performing Arts (30%). The final unit is called Performing to a Brief (40%) which is assessed and graded by the exam board. Written work will be set during lessons but students should expect to complete work in their allocated Home Learning time and ideally during our Support Session Monday Club which is on after school, should they need to upgrade and improve.

## Will all my study be in school?

Yes. However, the option of additional rehearsal time after school for practical exams is advised and encouraged to maintain a professional standard of work and behaviour. We also encourage you to be part of Music & Theatre Productions to help develop vital performance skills which will help your BTEC.

## What will be especially important for me to succeed on the course?

The most important thing is that you enjoy performing in front of others and enjoy watching others perform. The ability to try new things, take risks and make mistakes is also incredibly important in the nature of this work as it requires our pupils to be reflective and work beyond the boundaries and safety of what they are used to. **Participation is not optional:** all students are expected to work both individually and in groups to produce performance work and are expected to produce quality written work which meets the deadline and exam board grading specifications.

## How would it help me in future?

You will develop the following skills:

- Confidence when presenting to others
- Practical skills for communicating and expressing ideas, feelings and meaning to different audiences
- Your ability to investigate, interpret and analyse performances, texts and images
- Skills in team building and collaboration
- A tailored understanding of drama in the Performing Arts industry
- Opportunities for cultural visits to see real-life theatre and appreciate the industry as a whole
- Skills to help you potentially further your performing career.

## What will I study?

GCSE Photography starts with the opportunity for you to explore new techniques such as using digital cameras, image manipulation and learning how to use the darkroom through a series of mini skills-based projects. You will develop projects using your own ideas in response to set briefs and coursework projects. Examples of projects include 'Typology', 'Texture' and 'Narrative'. In year 10, you will use your own initiative and ideas to develop personal projects that demonstrate your new skills and reflect your own experiences and interests.

## How will it be similar to what I have done in year 9?

You will make use of many of the skills you have developed in Art during year 9 such as analysing the work of artists/photographers and also digital editing and image manipulation. You will also develop and refine your photography observation skills by learning how to look really carefully and exploring themes and issues that you are interested in. Projects are more individual and personal, as each student may be working on a different theme for their projects.

## How will it be different to other courses?

GCSE Photography is a very practical course where you will spend much of your time creating your own work, taking photos and editing them using digital and physical techniques. This will require independence, self-motivation and excellent time management. You should also have strong literacy skills as there will also be artist presentations, written analysis, evaluations and reviews to complete, all of which are assessed. There is no written final exam in Photography, but a practical one spread over 10 hours.

## How will my work be assessed?

You are assessed on your ability to record your ideas and observations in photographs, experiment with different editing techniques such as using Photoshop and also how you develop your ideas to produce a final idea that is unique and personal to you. Your coursework (Unit 1) is completed during year 10 and 11 and counts for 60% of the final grade. The exam project (Unit 2) completed in year 11 is worth 40% of the final grade. Coursework is continually assessed, and work completed throughout both year 10 and 11 contributes to the coursework grade.

## Will all my study be in school?

Most of your work will take place in lessons when you will be taking and editing photos, but home learning is also an important part of the course. You will need to take lots of photos outside of school time so that your photography work is personal to you, and you should also be able to upload and edit your photographs at home out of lessons on a computer or phone.

## What will be especially important for me to succeed on the course?

You need to be inquisitive, curious and have a keen interest in Photography. You should be prepared to go 'on location' to take your own photos out of school time and ideally, you should have your own camera (but a phone will be fine for use at home). Cameras are available for use in lessons at school. You should also enjoy working digitally on a computer as you will spend a lot of time editing photos using programmes such as Photoshop, Pixlr Editor and Photopea.

## How would it help me in future?

Photographs and images are everywhere, and the ability to take good photos and edit them skilfully is something that lots of careers value highly. This course will allow you to refine your creative skills by developing an understanding of exciting and creative digital media that you may already be familiar with. It could be the first step towards an A Level or simply a way of nurturing your creativity and independence. This could lead to a degree in a number of Art and Design courses, or help you to be creative in another course you choose. The range of possible careers you could pursue is enormous; you could become an animator, games designer, web designer, photojournalist, fashion photographer, food photographer etc.

GCSE

# PHOTOGRAPHY

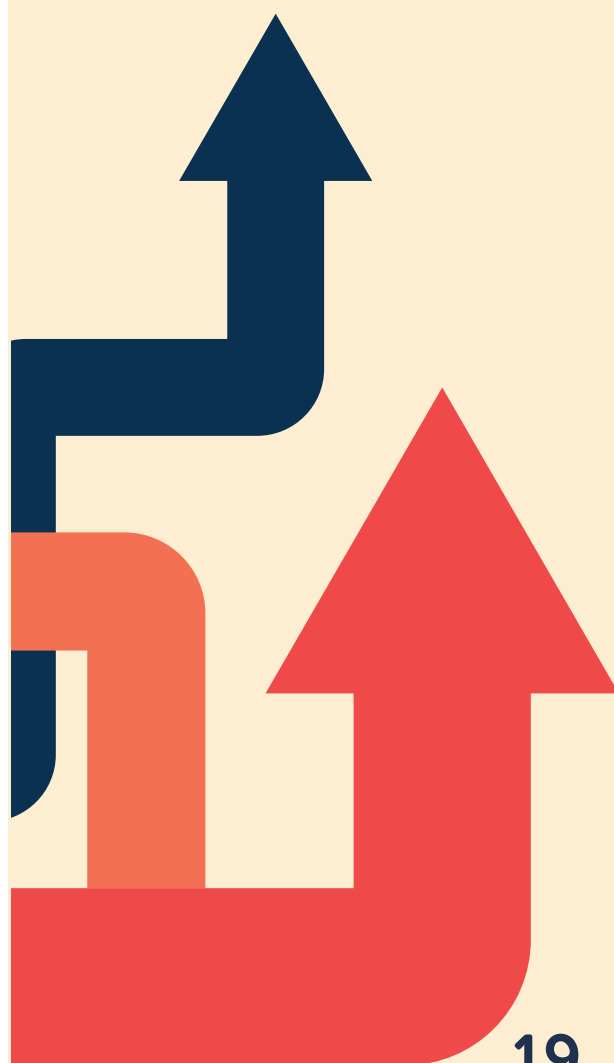
## What qualification will the course lead to?

GCSE in Photography

## Who are the best people to see for more information?

If you would like to know more about the course and see examples of GCSE projects, you should speak to any member of staff in the Art Department, or email Mrs Clazey if you have any questions.

Mrs L Clazey, Head of Art - [lclazey@clwweb.co.uk](mailto:lclazey@clwweb.co.uk)



GCSE

# PHYSICAL EDUCATION

What qualification will the course lead to?

GCSE in Physical Education

Who are the best people to see for more information?

Mrs O'Hara - rohara@clwweb.co.uk

**PLEASE NOTE THAT YOU CANNOT TAKE BOTH GCSE PE AND SPORT STUDIES**

**What will I study?**

Throughout years 10 and 11 you will study practical and theoretical aspects of Physical Education. Theory topics will be assessed via two one-hour exams and include: anatomy and physiology, physical training, socio-cultural influences, sports psychology and health, fitness and well-being. The exams make up 60% of the overall grade. Practical activities involve participating in a range of sports such as table tennis, netball and athletics with a real focus on skill development and improving standard of performance.

**How will it be similar to what I have done in year 9?**

The practical element of PE will remain, in that you will experience a range of sports. However, the focus of lessons is shifted much more towards improving the quality of performance.

**How will it be different to other courses?**

Unlike Sports Studies, you will sit two exams in year 11, submit an extended piece of written work AND be assessed in three practical activities.

**How will my work be assessed?**

TWO one-hour theory exams (end of year 11) - 60%.

Standard of practical performance assessed in THREE sporting activities (Team and Individual sports) - 30%.

Analysis & Evaluation of Performance task - 10%.

**Will all my study be in school?**

Mostly, but as part of your home learning requirements you will need to play sport in your own time, either through clubs based at the Sporting Club of Cramlington or other Centres local to you.

**What will be especially important for me to succeed on the course?**

A strong commitment to playing sport, with regular participation in at least TWO sports. Students must attend at least one extra-curricular sports club per week as their home learning requirement. This might be through our extensive extra-curricular programme or as a member of a local sports club. An interest in theoretical aspects of Physical Education, such as how the body moves and how we train to improve our performance, is essential.

**How would it help me in future?**

GCSE PE is an excellent foundation for moving on to a level 3 qualification in PE / Sport. Many students have then gone on to sport-related degrees and careers such as physiotherapy, teaching and sports coaching and development.

## What will I study?

Over two years you will study significant religious, philosophical and ethical questions. You will study two topics in total which will be subdivided into sections. Each topic will consist of 4 different parts. These will allow you the chance to develop an awareness of key debates and religious beliefs. This includes questions surrounding religious beliefs on life after death, whether war is ever right, how we should treat other people and the influence of religious leaders and founders shown through key events in their lives. The Study of Religion section of the course will focus specifically on the religions of Sikhism and Buddhism.

No belief is necessary or assumed. Have you got what it takes?

## How will it be similar to what I have done in year 9?

In year 9, you do some specific Philosophy and Ethics work about some big questions so expect similar debate about issues including animal rights, abortion, poverty and war. You have also studied how Buddhists and Sikhs respond to the issue of suffering as part of your work in year 8 so some of these ideas will be relevant to GCSE. You should also expect GCSE to be something completely different in terms of considering more religious beliefs and practices from religions you may not have heard of before or religions you know little about.

## How will it be different to other courses?

We live in a world full of exciting and sometimes controversial ideas. GCSE Religious Studies is different to other courses as it allows you to engage with these ideas, appreciating different views. This illustrates to future employers you understand beliefs influence the lives and values of others and shows you have respect and tolerance for everyone. If we are to fully know ourselves we need to be reflective about our beliefs and the events in the past that shaped them.

## How will my work be assessed?

There are two final examinations in year 11. There is no coursework.

## Will all my study be in school?

On the whole, you will study the course in school as usual. However, there may be the opportunity to visit specific places of worship which will help you to understand the beliefs and teachings of the religions. This will also offer you the chance to see different religious beliefs in action and to question members of different religions about their opinions on different ethical issues.

## What will be especially important for me to succeed on the course?

The most important thing is that you are open-minded and enjoy debating key issues. Being inquisitive is essential as you will not only be asked to answer questions about what we study but to ask them also. If you are nosy and love an argument this is the course for you! You do need to expect a significant amount of written work though.

## How would it help me in future?

This subject is about developing a healthy interest in people, examining different moral debates and having your own say on really important issues. It will therefore help you to understand what is going on in the world that you live in and who thinks what. The course also provides a chance to demonstrate and develop key skills such as communication and working with others and will complement a study of other Humanities subjects at GCSE or the study of subjects which have an evaluative element to them. It will also be a useful course for those of you considering further study of subjects like English Literature, History, Sociology and Psychology at A Level.

GCSE

# RELIGIOUS STUDIES

## What qualification will the course lead to?

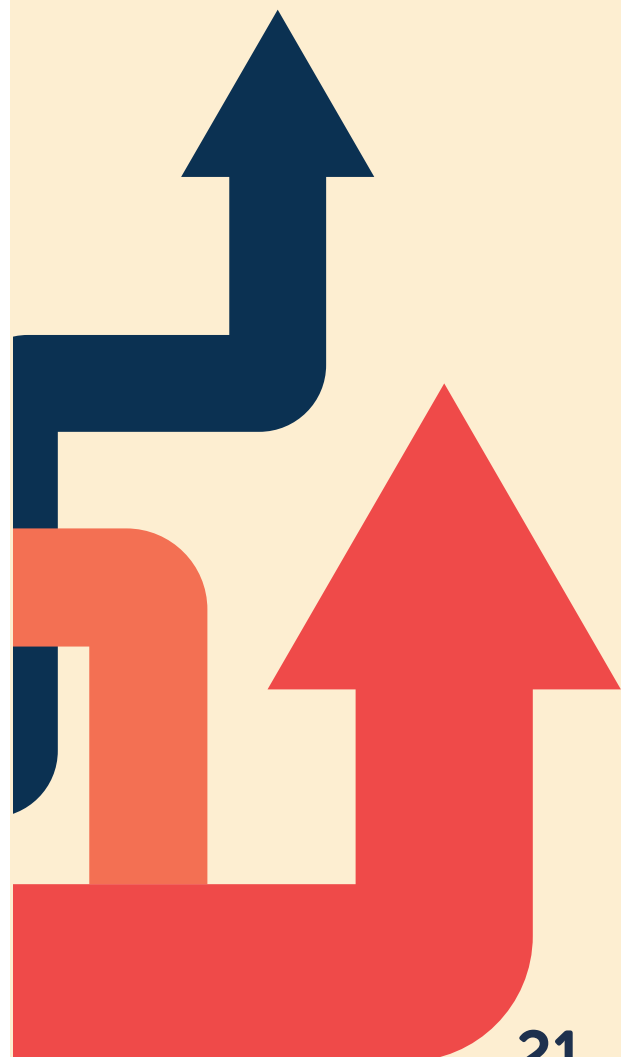
GCSE in Religious Studies

## Who are the best people to see for more information?

Ms Douglas, Head of Religious Studies -

[hdouglas@clwweb.co.uk](mailto:hdouglas@clwweb.co.uk)

Mrs Esbensen - [aesbensen@clwweb.co.uk](mailto:aesbensen@clwweb.co.uk)



# GCSE SPANISH

## What qualification will the course lead to?

GCSE in Spanish

## Who are the best people to see for more information?

Mrs Clark, Head of MFL - [kclark@clvweb.co.uk](mailto:kclark@clvweb.co.uk)

Miss Anderson - [fanderson@clvweb.co.uk](mailto:fanderson@clvweb.co.uk)  
or speak to your Spanish teacher this year.

Please remember that you cannot study GCSE Spanish if you have not taken it in year 9

## What will I study?

You will cover a variety of topic areas (many of which you have already met at KS3) such as Town, Holidays and School. You will also be given the opportunity to improve your written and spoken communication skills as well as deepening your understanding of the Spanish culture and language. Lessons will include the opportunity to listen to modern Spanish music, investigate aspects of Spanish life/life in Spanish-speaking countries, use ICT to communicate with others abroad and even to explore Spanish cinema.

## How will it be similar to what I have done in year 9?

There is a requirement that you can only choose this option if you are currently studying Spanish in year 9 - this can be either the year-long course or two half terms of Spanish as your Secure rotation option. If you have only done the Secure two half term course and would like to switch to Spanish full-time for Secure, then please see Miss Anderson/Mrs Clark and this can be arranged. You will come across some familiar topic areas but the depth in which you cover them and the way in which you are taught will be very different. There will be an emphasis on using authentic materials such as TV programmes, songs and films to help you understand that learning Spanish is not just about learning a language but also about exploring a culture.

## How will it be different to other courses?

The approach will be very similar to French. In Languages all skills are tested - reading, writing, speaking and listening - so exams are very different to other subjects. The exams in Spanish are not essay based so suit students who prefer shorter, skills focused exams.

## How will my work be assessed?

You will get continual feedback from your teacher on how to improve your skills. You will complete speaking, writing, listening and reading assessments throughout the two-year course. Each skill will be assessed in a final exam and each exam is worth 25% of the overall grade.

## Will all my study be in school?

Lessons will be conducted in school, but you will have the opportunity to take part in educational visits to the cinema or the theatre to see Spanish films and plays as well as other visits which will enhance your language learning and deepen your understanding of Spanish culture.

## What will be especially important for me to succeed on the course?

You must have a desire to learn another language and explore different cultures. Learning a language is not always easy so you need to demonstrate resilience and resourcefulness. You also have to take responsibility for your own learning. You could demonstrate this by reading an article in Spanish on the internet or downloading some Spanish music, in order to enhance your understanding of Spanish.

## How would it help me in future?

Learning a foreign language is becoming an increasingly sought-after skill. You do not need to be fluent in a language in order for it to help you in your career, so even if you do not continue after GCSE, you will be recognised (and paid!) accordingly.

Learning a foreign language encompasses a whole range of skills which are essential for your future. Linguists learn how to communicate effectively both in their writing and speaking. You also train to listen for key details and to read using different techniques such as skim reading, reading for detail and reading for inference. All of these skills make you more employable and show a potential employer you have broad horizons.

## What will I study?

You will study the following three units over the course of year 10 and 11:

- RI84: Contemporary Issues in Sport - external written exam
- RI85: Performance and Leadership in Sports Activities - centre assessed tasks/ externally moderated (practical based module)
- RI87: Increasing awareness of Outdoor and Adventurous Activities - centre assessed tasks/ externally moderated (practical based module).

## How will it be similar to what I have done in year 9?

You will continue to study the wider issues involved in sport, such as factors affecting participation, and you will continue to look at your own sporting performance in individual and team sports and assessing how you can improve. You will also have the opportunity to teach a lesson to year 7 students and take part in outdoor and adventurous activities.

## How will it be different to the other courses?

This is a vocationally related qualification which could support direct entry into the workplace or progression onto level 3 courses (A levels or vocational courses). The majority of your work will be assignment based.

## How will my work be assessed?

The Contemporary Issues in Sport module is assessed via a written exam which you sit in the Summer Term of year 11. All other units are internally assessed and externally moderated. The assignments will include, for example, investigations, written reports, presentations and diary evidence. You will also be assessed on your ability to perform a range of skills in two sports, selected from a range of activities, such as badminton and basketball.

## Will all my study be in school?

The course will be school-based but should be supported with additional participation in sport through community clubs or the school extra-curricular programme. It is also expected that in the lead up to the written exam, you will work through revision material and past papers at home.

## What will be especially important for me to succeed on the course?

You will need to have a real interest and a wish to be involved in the industry as a whole. Due to the assignment based nature of the course, you will need to be able to manage your time well, produce work to given deadlines and be prepared to act on advice in order to improve your work. Well developed ICT skills would also be valuable. You will also be required to demonstrate practical skills in conditioned practices and full games/ performances in both a team and individual sport. You will also be required to plan and deliver practical sessions to younger students and take part in various outdoor activities such as orienteering.

## How would it help me in future?

Progression to level 3 qualifications such as A levels or the OCR Cambridge Technical Sport course, available in our sixth form, or direct entry into the workplace in roles such as assistant coaches or activity leaders, leisure attendants or sport centre based assistants. If successful, students can then go on to sport-related degrees and careers such as physiotherapy, teaching and sports coaching and development.

# CAMBRIDGE NATIONAL CERTIFICATE

# SPORT STUDIES

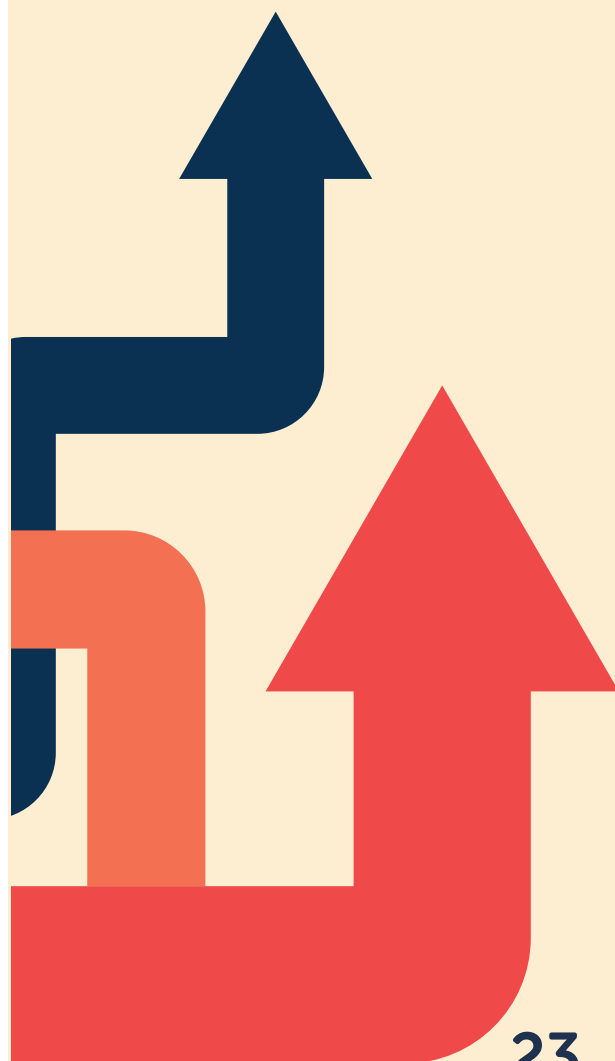
## What qualification will the course lead to?

Level 1/2 Cambridge National Certificate  
in Sport Studies

## Who are the best people to see for more information?

Your PE teachers.

**PLEASE NOTE THAT YOU  
CANNOT TAKE BOTH GCSE  
PE AND SPORT STUDIES**



BTEC - FIRST AWARD

# TRAVEL & TOURISM

What qualification will the course lead to?

BTEC First Award in Travel and Tourism

Who are the best people to see for more information?

Mr Knight, Head of Business -

cknight@clvweb.co.uk

Mr Baxter - cbaxter@clvweb.co.uk

What will I study?

- **The UK Travel Industry** - How important is tourism to the UK? How do tourism organisations operate? How do tourism organisations help to protect the environment?
- **Customer Experience** - Why is customer service so important? What happens if a customer doesn't experience good customer service? Why do customers show loyalty to a certain travel agency or chain? Why do customers stop using an organisation?
- **Developing UK and Worldwide Tourist Destinations** - Why are some tourist destinations more popular than others? Do business tourists look for something different from a destination than a leisure tourist? Can an attraction bring new tourists to a destination?

How will it be similar to what I have done in year 9?

This is a fresh subject for you and very different from anything you have done so far. However, it will build upon some of the skills you have demonstrated in year 9, as well as help you develop some new ones, such as:

- the ability to work independently
- the ability to solve problems
- the skills of project-based research, development and presentation
- the ability to work alongside other professionals, in a professional environment
- the ability to apply learning in vocational contexts.

How will it be different to other courses?

This is a vocational subject which is designed to give you a real understanding of the Tourism Industry. You will be involved in realistic projects which will develop your knowledge of how the Tourism Industry works. To aid your understanding of each unit you will take part in trips to real industry organisations which will allow you to experience what you are learning in class.

How will my work be assessed?

You will complete two controlled assessments across the two years. Your teacher will assess you and the exam board will moderate their marking. These will count for 60% of your final grade. There will also be one external exam that you will complete in January of year II and have the opportunity to retake, if necessary, at the end of year II. This is assessed by the exam board and makes up the remaining 40% of your grade.

Will all my study be in school?

The majority of your study will be in school, but there will be field trips to tourist attractions and tourism businesses.

What will be especially important for me to succeed on the course?

The students who are the most successful are the ones who show enthusiasm, hard work, independence, self-motivation and good organisation. If you get these five key things right you will be successful.

How would it help me in future?

You will gain an excellent insight into the Tourism Industry. Tourism is one of the largest industries in the world, so this course is ideal for students who may be considering a career in one of its many areas. The skills and knowledge you gain on this course relating to how businesses operate, the importance of outstanding service, and how to market a destination or attraction, are all transferable into a range of different career or study paths, not just within the tourism industry. This is a relevant subject for students looking to move on to Sixth Form, college or the workplace.



## What will I study?

Students who have opted for the GCSE Triple Science award study the three disciplines of Biology, Chemistry and Physics. The modules studied in Biology, Chemistry and Physics are shown in the table below:

Biology	Chemistry	Physics
<ul style="list-style-type: none"><li>• Cells</li><li>• Organisation</li><li>• Infection and Response</li><li>• Bioenergetics</li><li>• Homeostasis and Response</li><li>• Inheritance, Variation and Evolution</li><li>• Ecology.</li></ul>	<ul style="list-style-type: none"><li>• Atomic Structure and the Periodic Table</li><li>• Bonding, Structure and the Properties of Matter</li><li>• Quantitative Chemistry</li><li>• Chemical Changes</li><li>• Energy Changes</li><li>• The Rate of Chemical Change</li><li>• Organic Chemistry</li><li>• Chemical Analysis</li><li>• Chemistry of the Atmosphere</li><li>• Using Resources.</li></ul>	<ul style="list-style-type: none"><li>• Energy</li><li>• Electricity</li><li>• Particle Matter</li><li>• Atomic Structure</li><li>• Forces</li><li>• Waves</li><li>• Magnetism and Electromagnetism</li><li>• Space</li></ul>

## How will it be similar to what I have done in year 9?

In year 9, you will have studied the first modules of the GCSE Science course: Cell Biology, Atomic Structure and the Periodic Table and Energy.

In years 10 and 11, many of the topics you have met in previous years will be built on and you will develop your practical and analytical skills.

## How will it be different to other courses?

You will have a specialist teacher for each of the different sciences and at the end of year 11, you will be awarded a GCSE grade in each of the Science disciplines.

## How will my work be assessed?

There are two written exams (worth 50% each) for EACH of the separate sciences (2 exams in Biology, 2 exams in Chemistry and 2 exams in Physics).

All exams are taken at the end of year 11.

## Will all my study be in school?

The major content of the course will be completed in school. There will be regular home learning tasks and revision work to do in preparation for key assessments.

## What will be especially important for me to succeed on the course?

You need an enquiring mind to understand why and how things work. You need the ability to think 'outside of the box'. Both resilience and persistence in problem solving and experiments are important. You will need to be able to actively retrieve key knowledge and an ability to apply your knowledge is essential.

## How would it help me in future?

Many of the issues in Science are part of everyday life. Studying this course will help you make important decisions in the future. The separate Triple Science course will also help anyone studying Sciences further at A Level (Biology, Chemistry, Physics or Psychology). It will lay a good foundation for a career in medicine, nursing, sports science, marine biology, zoology, dentistry, engineering, environmental science, computer science, mechanics or astrophysics.

GCSE

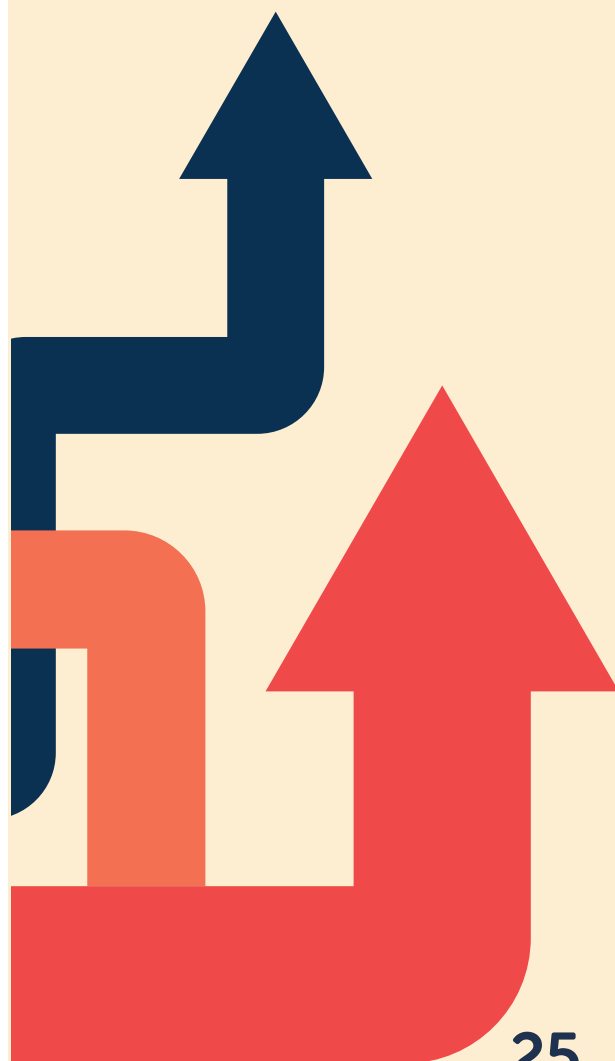
# TRIPLE SCIENCE

What qualification will the course lead to?

GCSE in Biology, Chemistry and Physics

Who are the best people to see for more information?

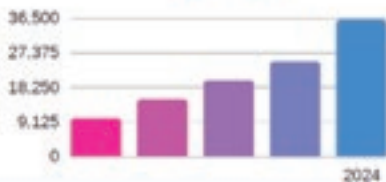
Speak to your Science teacher.



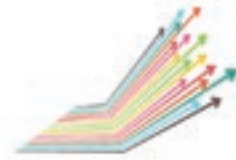
# LABOUR MARKET INFORMATION

The National Careers Service have provided some statistics on the growing career areas in the North East. Some of these could link into your option choices. For example, BTEC Health & Social Care or GCSE Triple Science could link with the growing Health and Life Sciences sector.

## Growth in the North East



**+36,000 jobs  
by 2024 in  
the North East**



Out of 12 regional areas the North East is the **7th** most productive

## Sectors Set To Grow



### Digital

Newcastle is second in the UK for high-growth digital businesses at 22%. (Tech Nation 2017 Report)



### Energy

The North East has a globally significant Offshore energy and subsea technology cluster.



### Health & Life Sciences

We are a region with excellence in the areas of pharmaceutical manufacturing, clinical research & translation and responding to an ageing population.



### Advanced Manufacturing

There are 62,500 people employed in advanced manufacturing in the North East. (UK top five)

## What are our areas of opportunity in the North East?

Have you considered where your subjects may take you?

Do you know if there will be opportunities for you in the North East when you are ready to start your career?

This is the current picture of employment in our area:



The Department for Education has produced this information relating to the core subjects which make up the English Baccalaureate (EBacc). The EBacc subjects might be the right combination for you but make sure you choose these because you have an interest in them or they will help you in your future career plans.

# HELP YOUR CHILD MAKE THE BEST GCSE CHOICES

You and your child may currently be considering, with advice from their school, what GCSE subjects they should take next year.

The Department for Education recommends these core subjects, which make up the English Baccalaureate (EBacc), and help keep options for young people open:

- **English language and English literature**
- **Maths**
- **Science**  
Combined science or 3 single sciences from Biology, Chemistry, Physics, and Computer science
- **History or Geography**
- **A language**  
Ancient or modern

---

## WHAT IS THE EBACC?

The EBacc is not a qualification in its own right – it's a combination of GCSE subjects, including a language, that offer an important range of knowledge and skills to young people.

### EBACC FUTURE PROOFS YOUR CHILD'S PROSPECTS

While your child may not have decided on their future career path yet, choosing the EBacc at GCSE gives them access to a full range of employment options when they leave secondary school and the broad knowledge that employers are looking for.

If they are thinking of going to university, the EBacc is also recommended by Britain's most prestigious universities.



**The research found that students studying EBacc subjects for GCSE, were more likely to stay in education after 16.**

The Centre for Longitudinal Studies,  
August 2017

# LANGUAGES GIVE YOUNG PEOPLE A COMPETITIVE EDGE

Languages are an important part of EBacc. Studying a foreign language can be extremely rewarding and exciting. They provide an insight into other cultures and can open the door to travel and employment opportunities. They can also broaden pupils' horizons, helping them flourish in new environments.

If your child finds languages difficult, don't forget that they will have been studying them for much less time than their other subjects and, while it can be a challenge, learning a language will greatly enhance their future opportunities.

What's more, we know that employers value languages, as they are increasingly important to make sure we can compete in the global market. Because of this, languages are increasingly becoming a requirement for many graduate schemes, such as those offered by Lidl.

**"Having language skills under your belt will help make you stand out from the crowd, whether you're applying for an entry level position, a management role or an internal transfer."**

Steve Cassidy, Senior Vice President & Managing Director, UK & Ireland, Hilton

**The Russell Group has named languages as subjects that open doors to more degrees at universities.**

(The Russell Group is a group of 24 universities with a shared focus on research and a reputation for academic achievement)

**"Young people skilled in the languages of Europe, China and other key markets around the world, can look forward to exciting and rewarding careers."**

Dr Adam Marshall, Director General of the British Chambers of Commerce

## WHAT ABOUT ARTS AND MUSIC?

While arts and music are not included in the EBacc, every child should still experience a high-quality arts and cultural education throughout their time at school as part of a balanced curriculum. If your child can take 9 GCSEs, they will have either 1 or 2 further options and can choose subjects based on their wider interests like art or music as well as others such as physical education or technology.

**Schools where more pupils select the EBacc at GCSE maintain the number of pupils that select arts.**

Trends in arts subjects in schools with increased EBacc entry July 2017



### Further Information

Search EBacc on GOV.UK for more information.

You should also get in touch with your child's school directly — they will be able to tell you about their specific GCSE and EBacc offer and explain all of your child's options.

# OPTIONS GRID

To complete your curriculum in year 10, you will make choices from the four groups below.

Each group contains a mix of subjects which is designed to give you a really rich choice. You need to select **one subject from each group**. You then need to **make a second choice** in case we are not able to give you your first choice – some courses are limited due to the space and staff available.

Group A (5 periods)	Group B (5 periods)	Group C (5 periods)	Group D (5 periods)
Art	Computer Science	Art	Art
Business Studies	French	Business Studies	Business Studies
Digital Information Technology (ICT), BTEC - Tech Award	Geography	Design & Technology	Design & Technology
Food Preparation & Nutrition	History	Geography	Food Preparation & Nutrition
French	Spanish	Health & Social Care, BTEC - Tech Award	French
Health & Social Care, BTEC - Tech Award		Performing Arts, BTEC - Tech Award	Geography
History		Physical Education	History
Media		Spanish	Music
Photography		Sport Studies, Cambridge National Certificate	Performing Arts, BTEC - Tech Award
Religious Studies		Triple Science	Physical Education
			Sport Studies, Cambridge National Certificate
			Travel & Tourism, BTEC - First Award
			Triple Science

# WHAT HAPPENS NEXT?

This is **your copy** of the options booklet which you need to take home and study very carefully. Make sure your parents see it too, and talk to them about it. It contains a lot of detailed information about every course on offer.

## Don't assume that you know what each course is about

- Read each course carefully
- Talk to the teachers whose names appear on each subject page. They'll be delighted to give you advice and answer any questions you may have
- If you make the wrong choices it will be very difficult to change courses in September, and in some cases impossible, so think very carefully about what you would like to do and what would best suit your needs.

From **Tuesday 7th March**, you will be able to access our Virtual Subject Information videos. These will give you access to lots of information from each subject and you will also be able to ask questions to subject teachers.

## Making your choices

You will need to make your provisional choices on **Frog** by **9am Monday 13th March**. This gives us an idea of the courses you would like to take. From the **week beginning 20th March** you will have an individual interview with a senior teacher to discuss these choices and to make sure that the courses you have selected best suit your needs.

## Dates To Remember

Virtual Subject Information Evening - Tuesday 7th March

GCSE Choices Completed By - Monday 13th March by 9am

Individual Interviews Start - Week beginning Monday 20th March



